

**INDICATORS...**The Nohmad terminal is fitted with two LED status indicators.

**LH LED flashing Blue:** Valid connection to the GSM network.  
**LH LED steady Blue:** Invalid connection to the GSM network.  
**RH LED off:** Normal operation, flashes once when media is read.  
**RH LED flashes repeatedly:** See table below:

NO:	CONDITION	ACTION
2	No TCP/IP connection	
3	No GPRS connection	
	LH LED steady:	Check signal strength
	LH LED flashing:	Check SIM/network parameters
4	Memory full, no TCP/IP connection	Check parameters and host server
5	Memory full, no GPRS connection	
	LH LED steady:	Check signal strength
	LH LED flashing:	Check SIM/network parameters
6	Memory full, connected, no server response	Check host software application
7	PIN required	Enter a correct PIN
8	SIM fault	Contact supplier
9	SIM fault	Check SIM is fitted
10	Memory full, connected, faulty server response	Check host software application

**REFERENCES...**Other documentation and utilities will relate to the Nohmad depending on how it is being used:

For use with our Fastlane product **MAN060-XX**  
 For use with customer software **MAN062-XX**  
**SDK download**  
**MAN050-XX**  
**MAN051-XX**  
**MAN052-XX**  
**MAN058-XX**

**SPECIFICATION:**

**Power:** Low power 5v DC mains adaptor, 0.5W average  
**Dimensions:** 165mm x 66mm x 50mm  
**Installation:** 2 x No. 6 screws or adhesive pad  
**Media:** iButton™, Fingerprint, Mifare  
**Indicators:** 4 digit numeric display  
 Two single-colour LED status indicators, Audible buzzer  
**SIM card:** Easy-install caged SIM connector  
**Cellular radio:** Quad GSM band (800/900/1800/1900 MHz)  
**Cellular data:** GPRS class 10 (packet)  
**RF connection:** Built-in dual-band antenna (900/1800 MHz)  
 External antenna connection and optional high-gain external antenna  
**Processing:** 104MHz, 32 bit ARM9 wireless processor  
**Clock:** Battery-backed Real Time Clock with calendar

**IMPORTANT SAFETY INFORMATION...**This terminal has been designed to meet international safety standards but, like any electrical equipment, care must be taken if safety is to be assured, read these safety instructions before installation and operation of the terminal. Retain this installation guide for future use.

- ☑ **DO** ensure that all the electrical connections (including power connections and interconnections between pieces of equipment) are properly made in accordance with the manufacturers instructions. **Equipment provided with a safety earth connection must be earthed**
- ☑ **DO** consult your dealer if you are in any doubt about installation, operation or safety of the equipment
- ☑ **DO** remember that some equipment continues to operate after mains power has been removed, because of an internal battery. In such cases a qualified Service Engineer must disconnect the battery before attempting to service the equipment
- ☒ **DO NOT** continue to operate the equipment if you are in any doubt about it working normally
- ☒ **DO NOT** remove any cover fastenings unless you are suitably qualified to do so. Even then isolate from the power connection before you start
- ☒ **DO NOT** allow the equipment to be exposed to rain or moisture other than permitted by the equipment's specification
- ☒ **DO NOT** attempt to service any battery fitted to the equipment. If the battery fitted to the circuit board is faulty, return the complete circuit board to an approved Service Centre. Removable batteries may be replaced by suitably qualified Personnel

**WARNING...**To comply with international safety standards the a.c. supply must be routed via an easily accessible isolating device. This device must have a contact gap of at least 3mm (three millimetres) and should break both Live and Neutral conductors simultaneously. If the Neutral conductor can be reliably identified the device may be in the Live conductor only.

**POWER REQUIREMENT...**The Nohmad Attendance Terminal is supplied with an external low power 5v DC mains adaptor, 0.5W average.



FINGERPRINT

IButton

MIFARE

NOHMAD GPRS TERMINAL

USER GUIDE

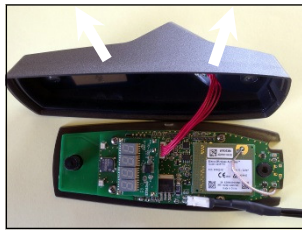
**INTRODUCTION...** Thank you for purchasing the **Nohmad** terminal. To ensure you get the best from this product, some careful system configuration is required. Please take time to read the setup notes fully below before proceeding.

**CONTENTS...** Carefully remove the contents and check that everything is present before continuing. There should be 1 x terminal, 1 x power supply, 1 x packet of fixing screws and adhesive pads, 1 x user guide.

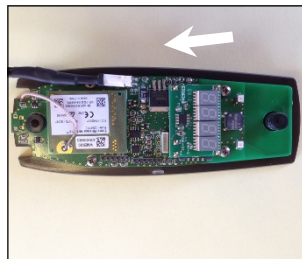
**1 PREPARATION...** Before anything else can be carried out, the **Nohmad** GPRS terminal must be opened up by separating the front case from the rear. Carefully undo the two screws holding them together making sure not to pull the cable connecting the reading device on the front cover and its connection to the circuit board whilst doing this.

The circuit board will be revealed. All connections are made to this including the power supply, SIM card and backup battery on the rear of the board.

If fitted, remove the isolator strip from the backup battery before continuing.



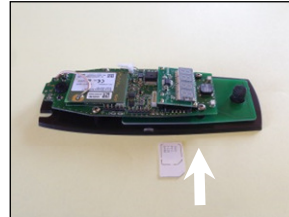
**2 POWER SUPPLY CONNECTION...** You need to attach the power supply to the terminal at this stage so that the setup procedure can continue.



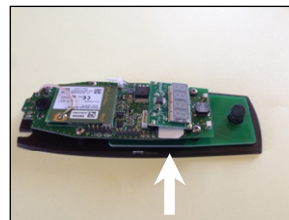
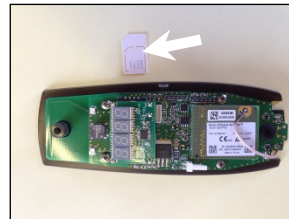
**PLEASE NOTE:** Ensure the power supply is turned off before connecting it to the **Nohmad** terminal. Push the connector into place as shown.

The cable can be routed through the back of the terminal or by the cut-out on the side of the case.

**3 SIM CARD FITTING...** If not already fitted, remove the SIM card carefully from the outer card making sure that you note the PIN and PUK number. On the **Nohmad** terminal locate the SIM slot as indicated. Always observe normal good practices when handling the SIM and avoid leaving fingerprints on the gold contacts.



Insert the SIM card into the carrier ensuring correct orientation. Ensure it fully seated.

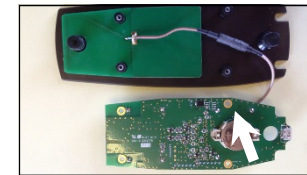


**PLEASE NOTE:** It is likely that the **Nohmad** terminal will already have the SIM card fitted if it has been Fastlane enabled. For more information on our Fastlane cloud service see our document **MAN060-XX**.

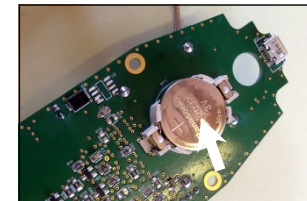
**4 BATTERY REPLACEMENT...** If it is necessary to replace the internal battery, turn the **Nohmad** terminal off at the mains first. Remove the front cover carefully remembering not to pull the cable connecting the reading device to the circuit board. Unplug this cable and then the power cable.



Undo and remove the 4 screws holding the circuit board to the rear of the terminal. Turn the board upside down to reveal the battery.



Remove the old battery and replace with the correct type (CR2032, 3V Lithium). Re-assemble the **Nohmad** terminal.



**5 EXTERNAL ANTENNA...** To fit an external antenna, detach the internal connection by unplugging it and then fit a suitable external one. Please contact TouchStar for further information on this.

