

SETTING THE IP ADDRESS ON THE EVOLUTION DOOR CONTROLLER

PRODUCT INFORMATION SHEET

INF081-07

SETTING THE IP ADDRESS ON THE EVOLUTION DOOR CONTROLLER

The evolution door controller can be configured on a laptop computer regardless of the network it will be connected to. This allows total control of the initial environment and the ability to perform setup procedures without external influences. There are two utilities available in the *Downloadable Software Utilities* folder on our Sharefile site:

EvDhcpSrv.exe - Executable program for assigning IP addresses to Evolution door controllers.

FBDiscover.exe - Executable program for finding and configuring Evolution door controllers.

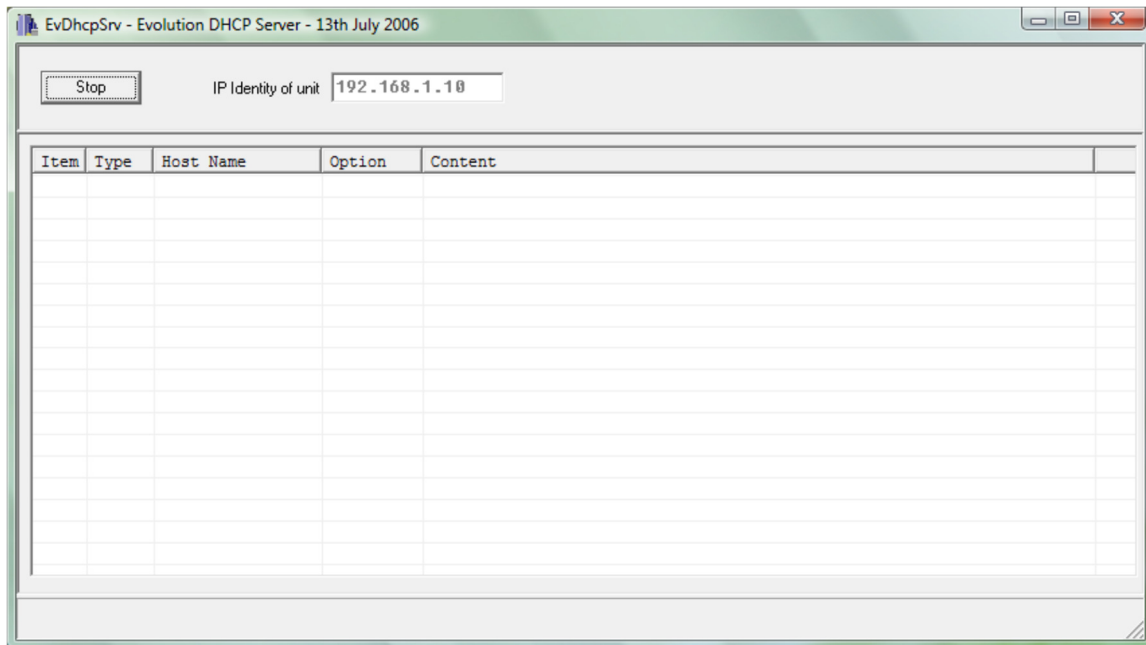
The procedure for setting up a door controller using a laptop is as follows:

Give the laptop network connection a fixed IP address e.g. **192.168.1.2**, Subnet **255.255.255.0**, gateway **192.168.1.1**.

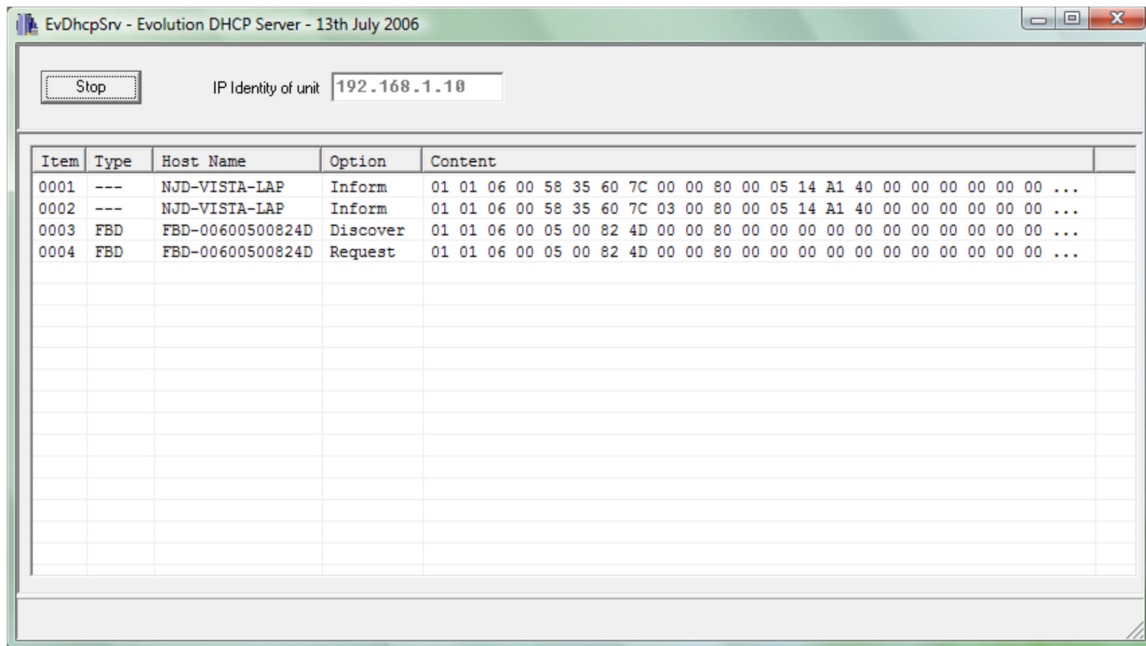
Connect the network connection to the door controller using a standard patch lead. **PLEASE NOTE:** most laptops will not require a crossover lead.

Power the door controller and then run the **EvDhcpSrv.exe** program on the laptop.

Type in the IP address to assign to the door controller (**PLEASE NOTE:** this must be in the range of that initially set in the network connection of the laptop). Click on *Start*.

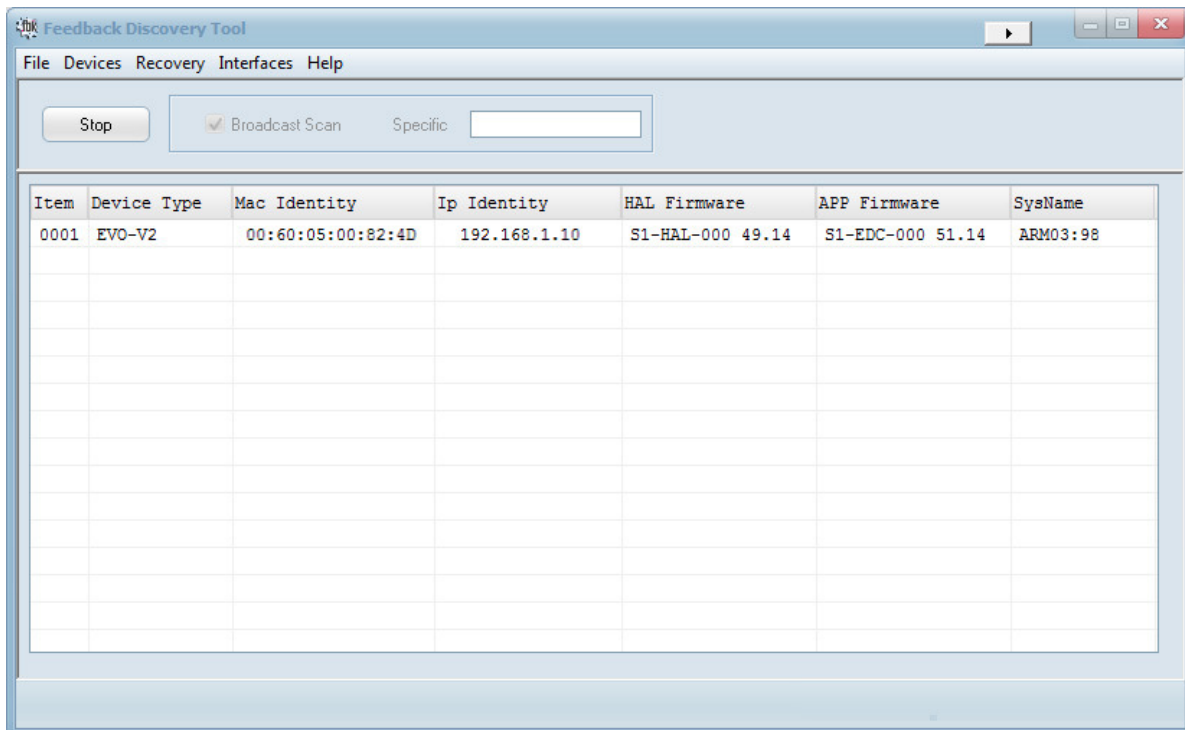


After a few seconds the following should appear in the main window. (If it does not, power cycle the door controller):



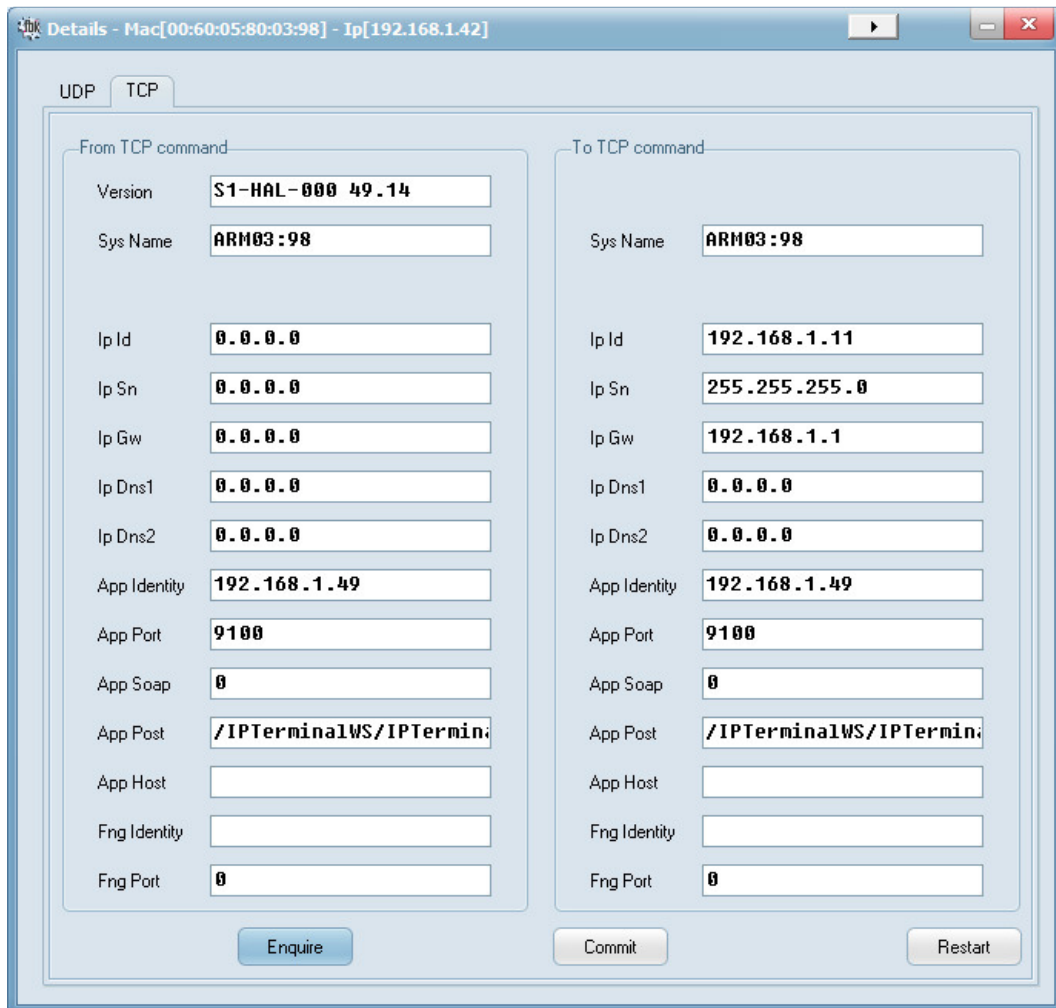
This means that the IP address has been assigned to the door controller you are connected to. Now use **FBDDiscover.exe** to change the IP address and other details of the door controller to those required for the installation.

Run **FBDDiscover.exe** and click on the **Start** button. After a few seconds the following should be displayed:



Double click the IP address and the door controller details dialog will appear. Click on the **TCP** tab. Click on **Enquire**. The **Details** screen will appear.

Enter the required details into the **To TCP Command** section. This should include the door controller ID (**TermId**), IP address (**IpId**), subnet mask (**IpSn**), gateway (**IpGw**) and port number (**SrvPt**). Click on the **Commit** button to assign them to the door controller. Click on the **Restart** button.



The door controller will disappear from the **FBDISCOVER.exe** screen for a few seconds and then reappear with the new IP address. If the IP address range being configured is different to that being used, the door controller will **NOT** reappear in **FBDISCOVER.exe**. However, this does not mean it has not been configured.

On the door controller an IP Address of **0.0.0.0** signifies DHCP.

In case of problems, if required, the below connections can be made momentarily on power up:

- **OUT1 to IP1** - Clear configuration, discard date/time, reset network
- **OUT1 to IP2** - Clear configuration, discard date/time
- **OUT1 to IP3** - Clear configuration
- **OUT2 to IP1** - Load demonstration configuration, Magstripe
- **OUT2 to IP2** - Load demonstration configuration, Wiegand
- **OUT2 to IP3** - Load demonstration configuration, Barcode

PLEASE NOTE: that the demonstration defaults the date/time if the clock has no valid time. Default date/time is: 00:00:00 01/01/2000.