



INSTALLING MICROTRAK EVOLUTION ON WINDOWS 7

PRODUCT INFORMATION SHEET

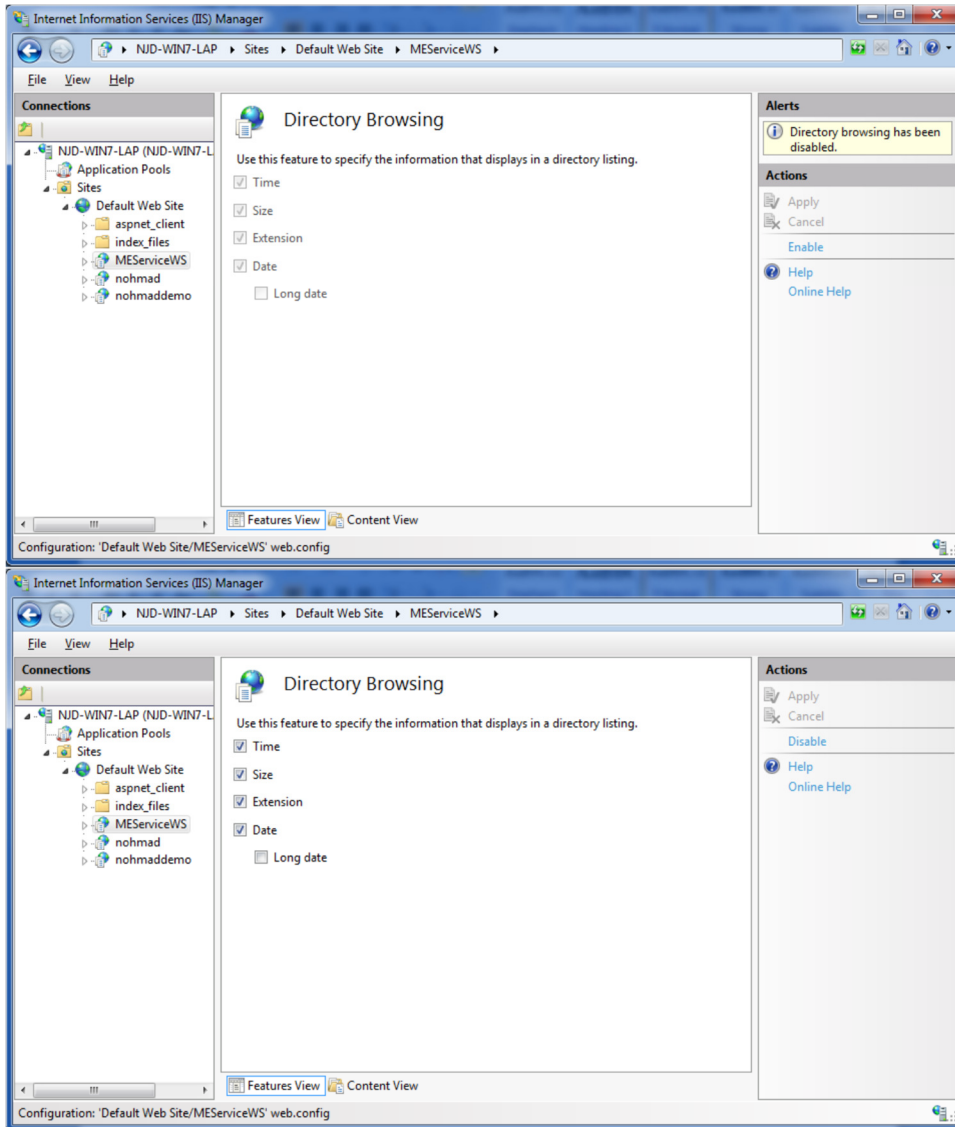
INF082-07

INSTALLING MICROTRAK EVOLUTION ON WINDOWS 7

There are a few things to remember when installing the software on a Windows 7 computer.

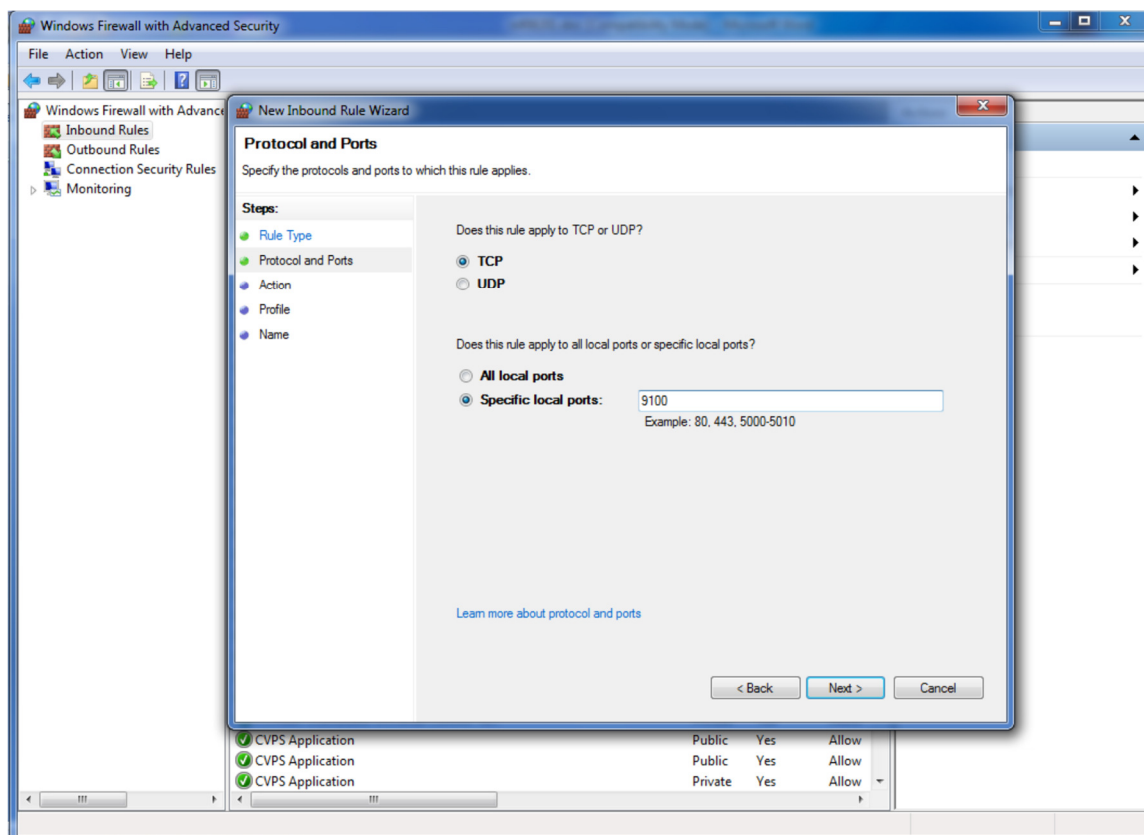
By default, not all components of IIS are enabled. Go to **Control Panel>Administrative Tools> Internet Information Services (IIS) Manager**. Select **Default Web Site>MEServiceWS**.

Under the **IIS** section, double click on **Directory Browsing**. Enable it.



Also you will need to configure the **Windows Firewall** to allow communication between the Access Controller and the Door Controllers.

Select **Control Panel>Windows Firewall>Advanced Settings**. Highlight **Inbound Rule** and then **Action>New Rule** from the Menu bar. Add a rule using the wizard for the port being used (by default 9100).



This should allow an installation of Microtrak Evolution.NET to work correctly on Windows 7.